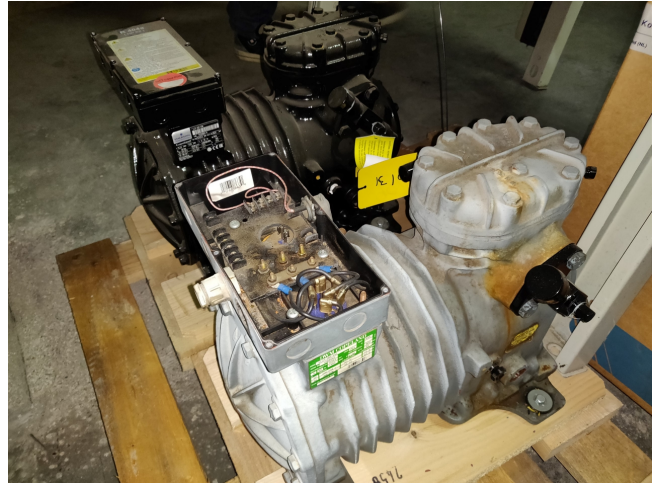


DWM DLLP-30X-EWL

Specifications

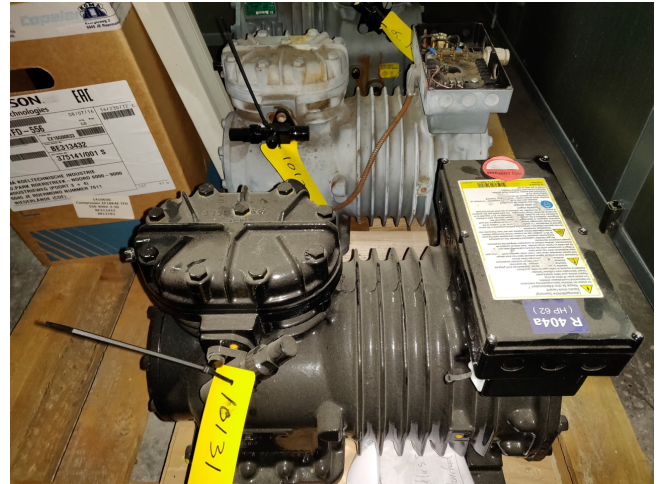
Brand	DWM
Type	DLLP-30X-EWL
Refrigerant	Freon
kW at -20°C/+40°C	6.53
kW at -30°C/+40°C	3.73
kW at -40°C/+40°C	1.70
kW at -45°C/+40°C	0.93
m3 / h	18.2
Remarks	R404a - R22 or other freon types
Weight in kg.	91
Stock	1



Description

Used DWM DLLP-30X-EWL

Used semi-hermetic reciprocating compressor DWM - Copeland DLLP-30X-EWL. Our capacity table is based on the used type of Freon. You can also use this compressor(s) on alternative types of Freon. For all the other specs (if available), see the picture of the manufacturer model plate or the attached pdf file. *Why choose for HOSBV? We're not only the largest used refrigeration specialist in Europe, but also, we deliver all equipment including an extensive test, warranty and industrial cleaning. *Optional we can also perform a new paint job and arrange the logistics.



Model: DLL-30 X
Capacity

R404A/R507

Cooling capacity [kW]

t _c \ t _e	-50	-45	-40	-35	-30	-25	-20
20	1.41	2.20	3.18	4.35	5.76	7.41	9.33
25	1.12	1.88	2.81	3.93	5.26	6.83	8.65
30	0.83	1.56	2.44	3.50	4.75	6.23	7.95
35	-	1.24	2.07	3.06	4.24	5.63	7.25
40	-	0.93	1.70	2.63	3.73	5.02	6.53
45	-	-	1.34	2.20	3.21	4.41	5.81
50	-	-	1.00	1.78	2.70	3.80	5.09
55	-	-	-	1.37	2.21	3.20	4.37

Power input [kW]

t _c \ t _e	-50	-45	-40	-35	-30	-25	-20
20	1.21	1.48	1.75	2.03	2.29	2.54	2.77
25	1.13	1.43	1.74	2.05	2.35	2.65	2.93
30	1.03	1.36	1.70	2.05	2.39	2.74	3.07
35	-	1.26	1.64	2.03	2.42	2.81	3.19
40	-	1.15	1.56	1.98	2.42	2.85	3.29
45	-	-	1.45	1.91	2.39	2.88	3.37
50	-	-	1.31	1.82	2.34	2.88	3.42
55	-	-	-	1.70	2.26	2.85	3.45